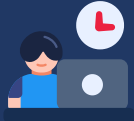




MARCIA BRENNER ASSOCIATES WI STATE REPORTING NEWSLETTER

2022 Issue #6 WI



MBA SUMMER OFFICE HOURSE

Our offices will close at noon (US local time) every Friday through August 12, 2022.



WI PSUG Oct. 30-Nov. 1

Early Bird Registration
Extended until
July 31st!
Click [here](#) to register



WHAT'S NEW IN STATE REPORTING

In our last issue, we provided brief descriptions of new data reporting elements that will be required for the upcoming 22-23 school year. In this issue, we wanted to provide more details on two of those data elements, Student Learning Modality and Timely Initial Evaluations (Indicator 11).

LEARNING MODALITY TYPE (PUBLIC SCHOOLS ONLY) -

Defined as the method of student participation in instruction: In-person, Remote, or Hybrid. This indication is set at the school level so that it defaults for all students. District Setup > Schools/School Info. This information can also be overridden at the student level on the new Student Learning Modality page.

Other Information	
Wisconsin State Report Information	
Charter School (Explain)	All other Schools
Ed-FI State School Number	16973
Learning Preference (Public Schools only)	01 - In-Person
School elects to allow DPI to collect student address information for all students in the School (If left blank, then School defaults to District setting).	No
WISEdata Reporting Option	Public School - All Students Reported

To create an individual record at the student level search for the student then click on State/Province-WI > Student Learning Modality > New. Enter a Start Date, select the appropriate Learning Modality from the drop-down menu and enter any notes for your internal purposes. Then click submit.

It is important to understand a Learning Modality should only be entered at the student level if it is a long-term change and there is no expectation of the student moving back to the current modality. A short-term quarantine does NOT necessitate a change in Learning Modality.

Student Learning Modality	
Apple, Jane	9 40708 M.B.A. HS
Start Date	MM/DD/YYYY
End Date	MM/DD/YYYY
Learning Modality	
Notes - Optional and not submitted to WISEdata	Approximately 4000 characters left
Submit	

Timely Initial Evaluation

This information will be published in your Data Exchange profile through Student Programs



WISCONSIN DEPARTMENT OF
Public Instruction

LEARNING MODALITY

INDICATOR 11

DPI 22-23 BACK TO SCHOOL ARTICLE

TIMELY INITIAL EVALUATIONS (INDICATOR 11)-

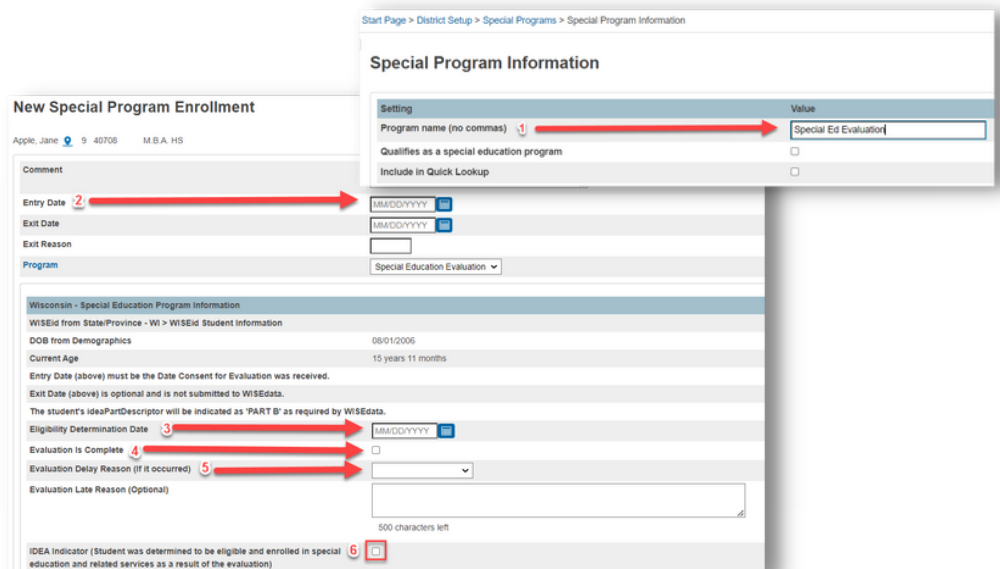
Indicator 11 is a report of performance on a requirement of special education law. A local educational agency (LEA) must determine if a child is a child with a disability within 60 days after the LEA receives parental consent for administering tests or other evaluation materials.

In PowerSchool, you will create two entries on the student's Special Programs (Student Programs in version 22.6.0) page, 1) With their Special Ed Evaluation information and 2) With their Special Education information.

If you are working with a third-party vendor to report your special education data, you will need to speak with them about instructions on how to enter this information.

Complete the steps below to enter a Special Ed. Evaluation record.

1. Create a Special Program, from Start Page, District Office> Click on Special Programs in left-hand navigation menu. Click NEW > Enter Program name = Special Ed Evaluation > Click Submit. May need to wait for overnight process to run for this option to show in the drop-down menu.
2. Create new Special Ed Evaluation record - Entry Date should equal the date consent was received by the parent/guardian. This cannot be a date in the future. Entering an exit date is optional.
3. Eligibility Determination date = the date the student was tested.
4. Check the box to indicate that the Evaluation Is Complete.
5. Evaluation Delay Reason (if it occurred)- select from the available options in the drop-down menu; C-Child Unavailable, I-Initial SLD Eval, T-Transfer. Enter an notes in the Evaluation Delay Reason text box.
6. IDEA Indicator (Student was determined to be eligible and enrolled in special education and related services as a result of the evaluation) - Check the box.



The screenshot shows the 'New Special Program Enrollment' form for a student named Apple, Jane. The form includes a 'Special Program Information' pop-up window and a main form with the following fields and annotations:

- Special Program Information Pop-up:**
 - Setting: Program name (no commas) - Value: Special Ed Evaluation (indicated by red arrow 1)
 - Qualifies as a special education program -
 - Include in Quick Lookup -
- Main Form Fields:**
 - Entry Date - (indicated by red arrow 2)
 - Exit Date -
 - Exit Reason -
 - Program - Special Education Evaluation (dropdown menu)
 - Wisconsin - Special Education Program Information section:
 - WISEd from State/Province - WI > WISEd Student Information
 - DOB from Demographics: 08/01/2006
 - Current Age: 15 years 11 months
 - Entry Date (above) must be the Date Consent for Evaluation was received.
 - Exit Date (above) is optional and is not submitted to WISEdata.
 - The student's IdeaPartDescriptor will be indicated as 'PART B' as required by WISEdata.
 - Eligibility Determination Date - (indicated by red arrow 3)
 - Evaluation Is Complete - (indicated by red arrow 4)
 - Evaluation Delay Reason (if it occurred) - (indicated by red arrow 5)
 - Evaluation Late Reason (Optional) -
 - IDEA Indicator (Student was determined to be eligible and enrolled in special education and related services as a result of the evaluation) - (indicated by red arrow 6)

UPCOMING DPI EVENTS

August 8, 2022
CTE Workshop
 9 AM -12 PM



22-23 DATA EXCHANGE

Directions for the upcoming school year's Data Exchange profile will likely be shared toward the end of August.

 **STATE REPORTING RELEASE NOTES...**

Details from the June Release Notes can be found below.

<u>22.6.2</u>	PSSR-288210, STUDENT SCHOOL ASSOCIATION NOT PUBLISHING, Student School Association records now publish for each school enrollment and unique remote enrollments who's dates are outside an enrollment record in that school.
<u>22.6.3</u>	PSSR-294831, 22-23 TIMELY INITIAL EVALUATIONS. Districts are now required to submit information for Special Education Evaluations (Timely Initial Evaluations Indicator 11). A new Program is added to the Special Programs page called "Special Education Evaluation".
<u>22.6.3</u>	PSSR-288569, 22-23 STUDENT LEARNING MODALITY NEW. A new page is created for Student Modality from the State/Province - WI link. The most current Student Modality displays on the WISEdata Student Info page.
<u>22.6.3</u>	PSSR-293772, ADD UI OPTION FOR STUDENT LEARNING MODALITY DEFAULT. A Student Learning Modality default option is added to the Schools/Schools Info page to allow districts to set a Student Learning Modality default at the school level.
<u>22.6.3</u>	PSSR-285144, 2022-23 DISABLE MULTIPLE TRIBAL AFFILIATION SELECTION Beginning in the 2022-23 school year DPI will accept only one Tribal Affiliation for a student. If more than one Tribal Affiliation is selected, Affiliation 1 will be sent to WISEdata. This applies to Districts using the Ancestry/ Ethnic Origins and Tribal Affiliation.
<u>22.6.3</u>	PSSR-291050, UPDATE ADA/ADM CALCULATION BASED ON THE SCHOOL, logic to calculate the ADA (actual days) and ADM (possible days) has been updated to report attendance data specific to each school.
<u>22.6.3</u>	<p>*PSSR-284917, IMMUNIZATION REQUEST USING THE WRONG SCHOOL YEAR, Immunization request is using the wrong URL i,e hard-coded value 2021..that has been changed to make it dynamic.</p> <p>*THIS IS THE PSSR WE HAVE BEEN UPDATING OUR DISTRICTS ON. CASES RELATED TO THIS ISSUE WILL BE CLOSED AFTER CONFIRMATION OF THE RELEASE.</p>